

# CLL Global Virtual Town Hall

**Thank you for your patience.  
We will begin shortly.**

- Have questions for our panel?
- Please email them to [Production@theHCCollective.com](mailto:Production@theHCCollective.com)



• CHRONIC LYMPHOCYTIC LEUKEMIA •

# Questions?

Please send an email to  
[Production@theHCCollective.com](mailto:Production@theHCCollective.com)

A video of today's Town Hall presentation will be  
available at our website [www.cliglobal.org](http://www.cliglobal.org)



• CHRONIC LYMPHOCYTIC LEUKEMIA •

# **Dr. William Wierda**

**President & CEO**

**CLL Global Research Foundation**

**Jane and John Justin Distinguished Chair in Leukemia  
Research in Honor of Dr. Elihu Estey**

**Executive Medical Director**

**The University of Texas MD Anderson Cancer Center**



• CHRONIC LYMPHOCYTIC LEUKEMIA •

# Dr. Erin Parry

Instructor, Medicine

Harvard Medical School

Investigator, Hematologic Neoplasia

Dana-Farber Cancer Institute



• CHRONIC LYMPHOCYTIC LEUKEMIA •

# WHAT'S NEW IN CLL?



12 September 2024

**William G. Wierda MD, PhD**

*Professor of Medicine*

*Section Head, CLL*

*Department of Leukemia*

*U.T. M.D. Anderson Cancer Center*

*Houston, TX USA*



# MEETING UPDATES

American Society of Clinical Oncology  
ASCO 2024

European Hematology Association  
EHA 2024



# ASCO 2024

- Phase II CAPTIVATE outcomes in high-risk CLL with fixed-duration IBR/VEN in treatment-naïve CLL



+

•

# EHA 2024

- *TP53* mutations and outcomes in CLL
- Phase III ERADIC trial (FILO) of IBR/VEN vs. FCR for treatment-naïve CLL
- Phase II 7-yr follow up of IBR/VEN/OBIN (OSU) for CLL
- Phase II Zanubrutinib + Venetoclax (SEQUOIA Arm D) for del(17p) CLL
- Phase II Pirtobrutinib/Venetoclax/Obinutuzumab (MDACC) for treatment-naïve CLL
- Phase II Liso-cel (TRANSCEND 004 CLL) correlations with response in R/R CLL
- Phase I study of BTK-degrader (BGB-16673) (Beigene) for R/R CLL
- Phase I study of Zanubrutinib + Sonrotoclax (Beigene) for R/R CLL
- Phase II Epcoritimab (Genmab/AbbVie) for Richter transformation

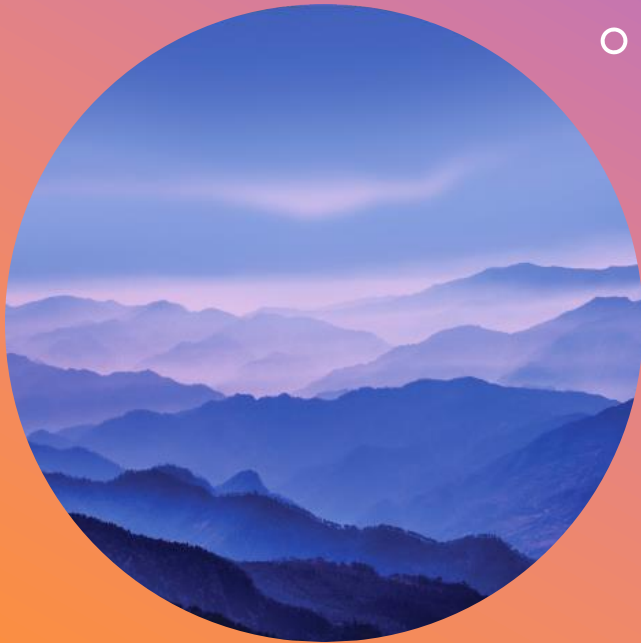




# UPCOMING MEETINGS

European Research Initiative on CLL  
ERIC 2024 (Sept)

American Society of Hematology  
ASH 2024 (Dec)



# THANK YOU

**William G. Wierda MD,PhD**

713-745-0428

[wwierda@mdanderson.org](mailto:wwierda@mdanderson.org)

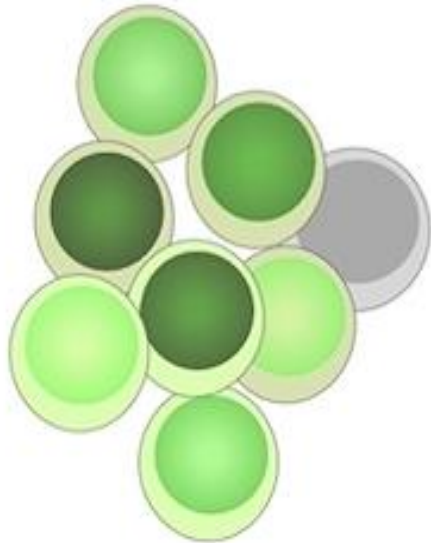
# CLL Global Research Foundation Research Update: Richter transformation

Erin Parry MD PhD  
September 12, 2024

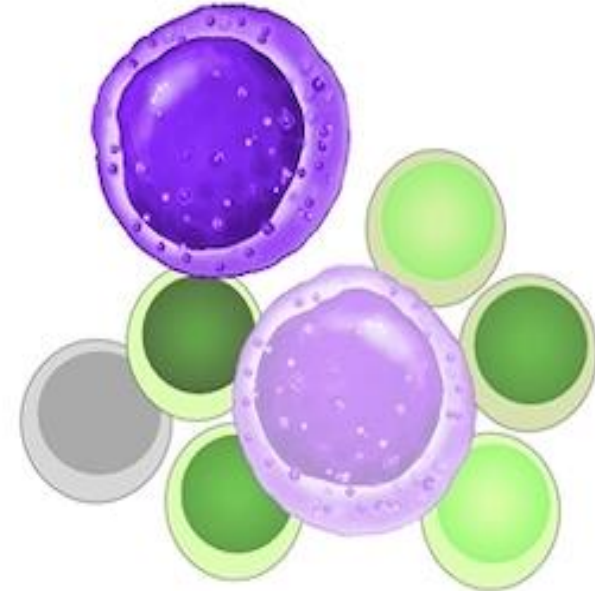


**Dana-Farber**  
Cancer Institute

# Histologic transformation: CLL to Richter transformation



*Transformation*



Indolent B cell malignancy

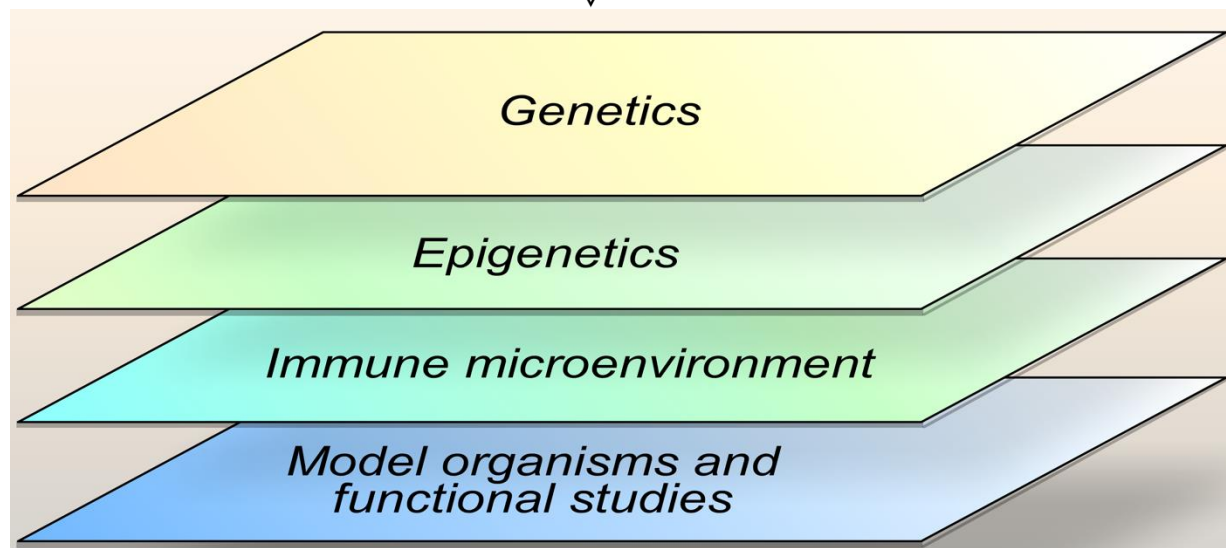
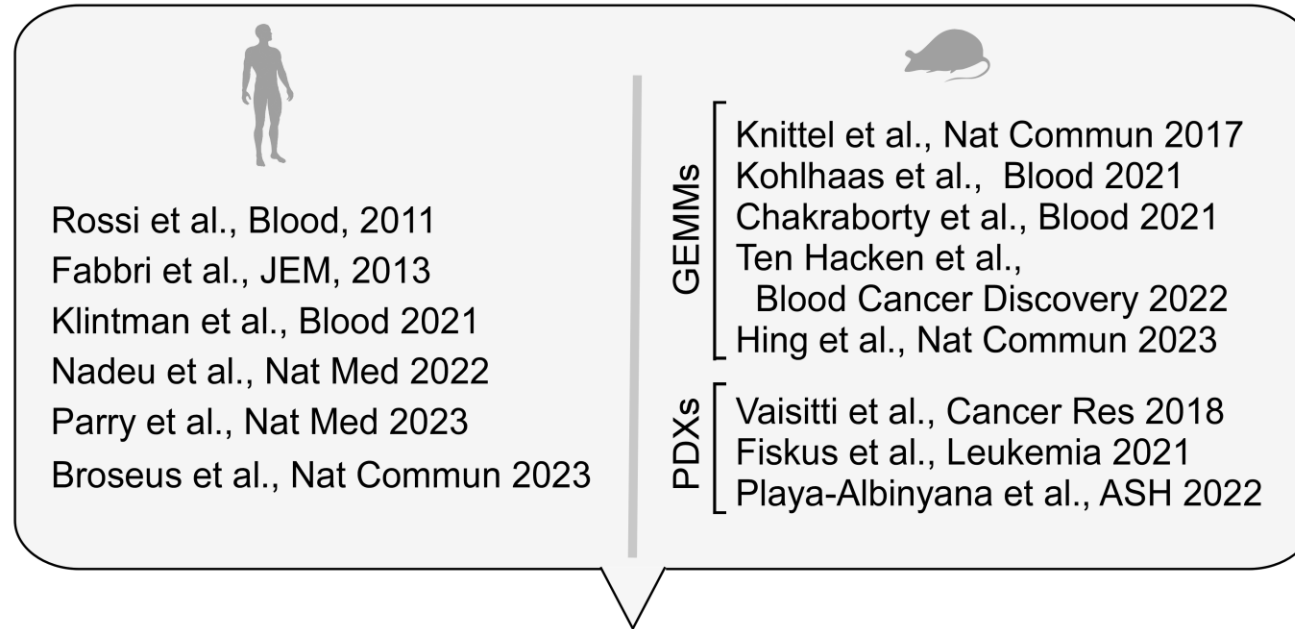
Aggressive lymphoma

Chronic lymphocytic leukemia (CLL)



Richter transformation (RT)  
or Richter syndrome (RS)

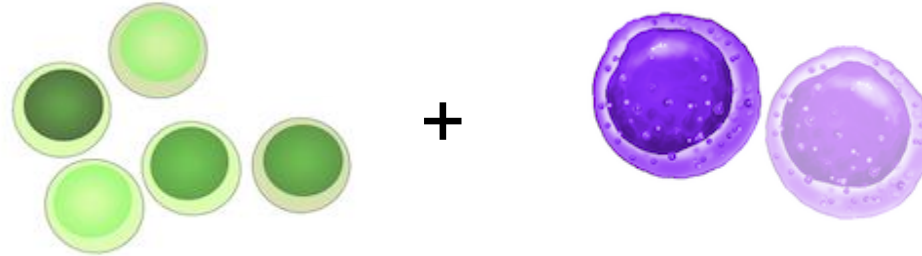
# Recent advances: Understanding transformation



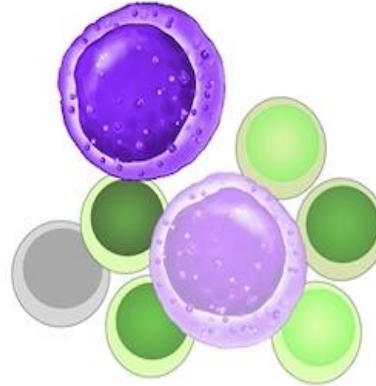
# Why has transformation been challenging to study?

## Challenges:

1. Sample acquisition



2. Sample admixture

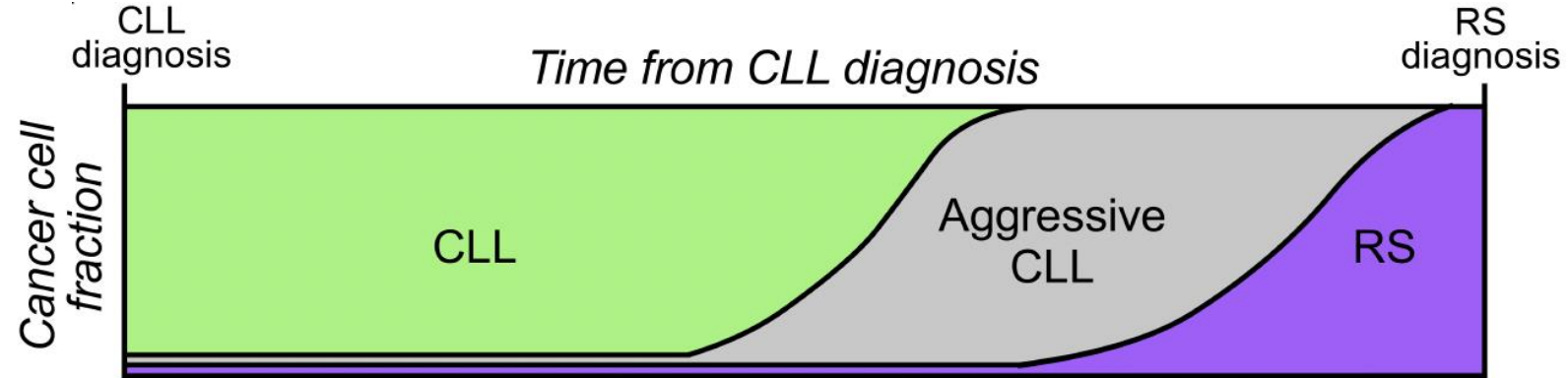


**Collaboration and sample banking are key to studying RS !!**

# **How can we translate scientific knowledge to the clinic to make a difference for patients with CLL?**

**Improved RS diagnosis?  
Better predict transformation risk?  
Can we intercept transformation?**

# CLL Global project: Towards early detection of transformation





**Thank You CLL Global Research Foundation !!!**

# Q&A

**Send questions to**



[Production@theHCCollective.com](mailto:Production@theHCCollective.com)



• CHRONIC LYMPHOCYTIC LEUKEMIA •

# Thank You For Joining!

## Contact Us



**Sam Pace**  
[mcpace@cllglobal.org](mailto:mcpace@cllglobal.org)  
**(713) 745-1861**



**Visit our website at [cllglobal.org](http://cllglobal.org)**  
**to view slides from today's presentation**



**Follow us on Facebook at [facebook.com/cllglobal](https://facebook.com/cllglobal)**  
**to keep up with the latest **CLL** news**



**CLL Global Research Foundation**  
**P.O. Box 301402, Unit 428**  
**Houston, Texas 77230**