



CLL TIDBITS

Bits and Pieces from the CLL Global Community

QUICK LINKS

[News](#)

[Mission](#)

[More About Us](#)

[Tidbits Archives](#)

July 2015

Greetings Friends!

July has been a busy month for CLL Global. Along with fireworks, picnics, and summer vacations, we have been planning our fall Alliance meeting. This year the meeting will be held near Sydney, Australia, just before the XVIth annual International Workshop of Chronic Lymphocytic Leukemia (iwCLL) conference. The theme of the CLL Global Alliance meeting is "Underdeveloped Opportunities in CLL". We will bring together experts in genetics, immunology, clinical trials, bone marrow, and the treatment of CLL, to strategize new opportunities for finding a cure for the disease. Stay tuned for a review of the Alliance meeting's proceedings, as well as an update on highlights from iwCLL.

NEWLY DIAGNOSED

If you have recently been diagnosed with CLL, you probably have questions.

[Information about CLL](#)

[What we are doing to defeat CLL](#)

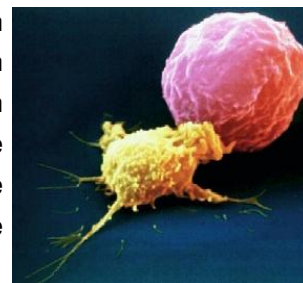
[List of CLL specialists around the world
\(Provided by ACOR\)](#)

CLL GLOBAL GRANTEE HIGHLIGHT

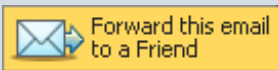
Dr. Elizabeth Shpall, M.D. and Dr. Katy Rezvani, M.D., Ph.D.

Ex vivo expansion of cord blood natural killer cells for CLL therapy

Drs. Elizabeth Shpall and Katy Rezvani are professors in the Stem Cell Transplant Department at MD Anderson Cancer Center. Their research interest is in restoration of immune system function in patients with CLL. Dr. Shpall and Rezvani are recent recipients of a CLL Global Alliance grant. Below they provide an update on the current status of their research.



BE SOCIAL



[Join our Cause](#)

Find us on Facebook

FEATURED VIDEOS

Recent data support an important role for the immune system in the control of cancer. However, defects of the immune system have been described in CLL. Indeed, progressive dysfunction of the immune system often parallels disease progression. We propose to study the role of the innate immune system, specifically powerful immune system cells called natural killer (NK) cells, in the control of CLL. The purpose of our study is to perform a comprehensive analysis of NK cell function in



ASCO 2015 CLL News

Dr. Nicole Lamanna from Columbia University Medical Center reviews CLL news from the 2015 American Society of Clinical Oncology held in Chicago, IL.

CLL. We have shown that whereas in some CLL patients NK cell function is normal, in other patients NK cells display significant quantitative and qualitative abnormalities. A detailed understanding of the underlying mechanism for the defect in NK function will help us to develop strategies to enhance NK cell function for the treatment of patients with CLL. One such strategy is the genetic modification of NK cells so that they can recognize a common molecule, CD19, on B cells. Our preliminary data show that such "redirected" NK cells are much more efficient at recognizing CLL cells compared to their unmodified counterparts.

SAVE THE DATE

Town Meeting to be Held on October 25, 2015

CLL Global, in conjunction with our partners at Patient Power, will be hosting a town meeting on October 25, 2015 in Houston, TX. CLL Global CEO Dr.

Michael Keating and CLL expert Dr. Nicole Lamanna will be available to provide the



latest information on CLL treatment options, clinical trials and ways to improve the quality of life for CLL patients. There will also be a question and answer session. Don't live close to Houston? No problem. The forum will include a virtual option for online participation. Details on how you can register for this event will be provided soon on our website at <http://www.cllglobal.org/>.

THANK YOU FOR SUPPORTING US!

As summer winds down and we look towards a new season, it is good to take a moment and reflect on the memories we have made in the first half of this year. Whether it was a trip overseas, a cruise to the tropics, or a campfire in the backyard, these memories are what carry us through when times are not so sunny. CLL Global similarly strives to be a bright spot of hope for CLL patients and the entire CLL community. Thank you for helping us to achieve this goal.

Sincerely,

CLL Global Research Foundation

AMAZON SMILE



Donate to CLL Global the next time you shop on Amazon. All you need to do is go to the AmazonSmile webpage (<http://amzn.to/1I5LVhk>), select CLL Global as the charitable organization you would like to recognize, and for eligible purchases the AmazonSmile Foundation will donate 0.5% of the purchase price to CLL Global.

DONATE NOW!!

